



Door chime and push button with a 100m range.

# DOOR CHIME



## Accessories

### Push Button

- x2 Fixing Screws
- x2 Rawl Plugs
- Double Sided Sticky Pad
- Push Button Battery (3V CR2032)

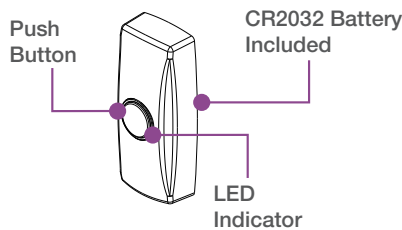
### Socket/Chime

- x2 Fixing Screws

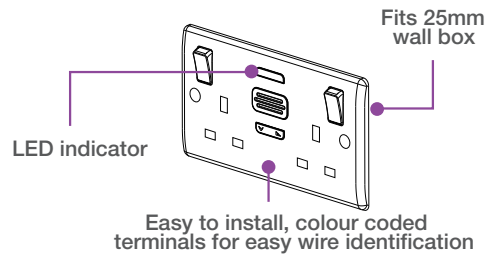


Technical Data	
Push Button Battery:	1 X 3V CR2032
Push Button:	IP44
Melody Count:	6
Sound Level:	80dB
Range:	100M (open air)
Wall Box Depth:	25mm

## Push Button

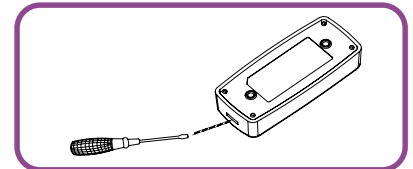


## Power Socket

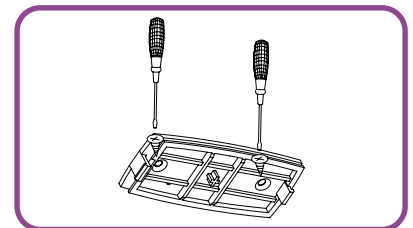


## Installation:

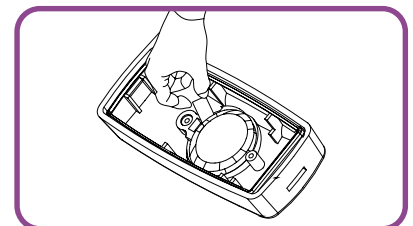
1. First, identify a suitable area for the push button to be positioned. Ideally, this should be sheltered from rain or excess heat. It would be recommended that the button is fitted to the door frame itself, so you are able to screw directly into the woodwork, making the installation simple.
2. Place a small flathead screwdriver into the slotted hole and gently twist to remove push button back.



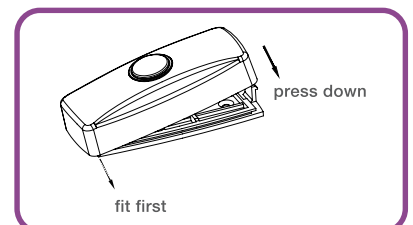
3. Offer the push button backing up to the wall and drill holes. If fitting to masonry, use a 6mm drill bit, as per the depressions and securing by using the supplied rawl plugs and screws. If fitting directly to the woodwork, use a 2mm drill bit and screw directly into frame or use the provided sticky pad.



4. Pull plastic tab from under battery to power the push button.



5. Refit the push button to the secured backing by offering up the button of the push button and gently pushing back together.



## Socket Installation

### Safety Warning

For your safety, this product must be installed in accordance with local Building Regulations. If in any doubt, or where required by the law, consult a competent person who is registered with an electrical self-certification scheme. Further information is available online or from your Local Authority.

Please read carefully and use in accordance with these safety wiring instructions. Before commencing any electrical work ensure the supply is switched off at the mains. Either by switching off the consumer unit or by removing the appropriate fuse or turning off MCB (trip). Wiring should be in accordance with the latest edition of the IET regulations (BS 7671).

To prevent fire hazard always use cable of the correct rating & type for the application.

**Warning do not exceed the load rating of this device as stated on the rear of the product.**

### Wire Identification – Twin & Earth Cable

Note - As from 1st April 2004 new colour codes for hard wire installations were introduced.

**EARTH** = Green/Yellow Slewing

**NEUTRAL** = Black (pre Apr 04) / Blue (after Apr 04)

**LIVE** = Red (pre Apr 04) / Brown (after Apr 04)



### Wiring Instructions

#### 1. Power Off

Before commencing work always isolate the power at the consumer unit / fuse box.

\*Note – If your installation uses a four-lug metal mounting box, remove the top and bottom lugs or bend fully back.

#### 2a. Replacing an existing accessory

1. Unscrew the accessory from the wall/mounting box.

2. Note the cable connections: The illustration shows 1 wire of each colour connected to each terminal. There should be an additional connection between the mounting box earth terminal and the accessory earth terminal.

3. Unscrew each terminal to release the wire.

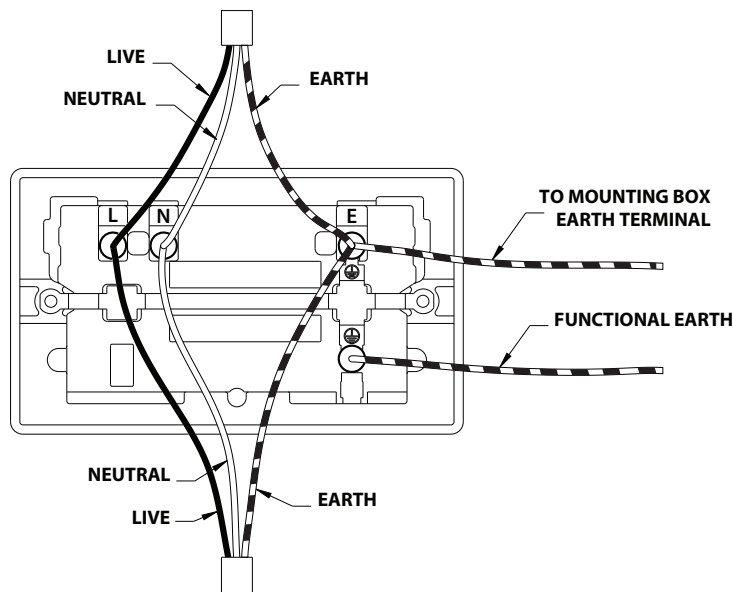
#### 2b. New installation

1. Install mounting box (metal or moulded) for either flush or surface mounting, ensuring appropriate size of product.

2. Select the most suitable entry point of the mounting box (knock-out) and route the cables through. If a metal box is used, a cable grommet should be fitted to the entry point.

3. Cables should be prepared so a sufficient conductor length reaches the terminals. Strip the ends of the individual conductors leaving an adequate length bare to enter terminals.

#### 3. Connection



1. Line up the new accessory to mounting box and take note of where each terminal is located.

2. Connect each wire to the matching terminal. An earth connection should always be made between the mounting box earth terminal and the accessory earth terminal, where fitted. All bare earth wires must be sheathed with green/yellow sleeving. When connecting the new accessory ensure that only the bare end of the wire enters the terminal and no bare wires are visible.

3. Tighten terminal screws securely. (Do not over tighten)

4. This socket is fitted with two linked terminals to provide a dual earth facility. This is for use in "clean" installations where additional earth capacity is required to comply with Regulation 607 IEE Wiring Regulations.

#### 4. Complete Installation & Test

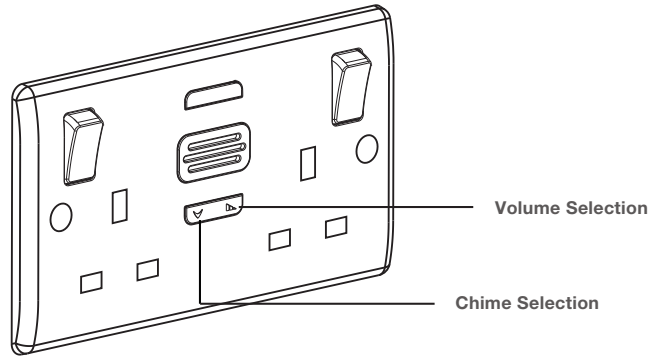
1. Carefully position the accessory into the mounting box, ensuring that no wires are trapped between the plate and the wall and secure with screws (do not over tighten) then insert screw covers (optional).

2. Once the installation has been completed correctly, replace the fuse/reset MCB (trip), switch the power back on at the consumer unit and test.

### Unique Code Selection

The door chime and push button will be paired straight out of the box, with 1 out of 1 million unique codes to prevent interference with another door chime. If the door chime does not sound, please refer to the 'Pairing Additional Push Buttons & Door Chimes' section.

## Setup Door Chime



### Chime Selection

Single press the chime button on the left of the door chime socket to filter through the six different options – 4 x ‘Ding-dong’ and 2 x ‘Westminster’ chimes.

### Volume Selection

1. Single press the right side volume selection button to filter through the four different volumes settings. Options include – No sound, low, mid and high volume.
2. The LED flasher will always flash for 10 seconds on each press of the button.

### Pairing Additional Push Buttons & Door Chimes

Press and hold the chime button until the LED illuminates, then release. Push the button on the ‘Push Button’, once the door chime socket will ring, then the units are paired. Repeat the process to pair additional push buttons to the door chime. (A maximum of 16 push buttons can be paired).

### Reset Door Chime

Press and hold the chime button for 10 seconds or until you hear a triple ‘beep’ to reset the door chime. Maximum distance is based on an open area environment. Any walls, doors or ceilings may reduce the operating range. Door chime is to be used indoors only.

### Door Chime Not Working?

1. Ensure the battery in the push button is new.
2. Objects and materials, such as walls, doors, ceilings and furniture, are blocking the signal. Try moving the chime closer to the push button.
3. Wireless interference can be caused by external wireless devices, such as alarms and adaptors. It is recommend not to plug-in such devices in the door chime socket, or have in the close vicinity.
4. Door chime and push button are not paired – please refer to the ‘Pairing Additional Push Buttons’ section.
5. Ensure wired connections are made good, MCB is on and power is being made to the socket.

EU Directives	Conformas to
Radio Equipment Directive (RED) 2014/53/EU	Article 3.1(a) Safety: EN62368-1:2014+A11:2017
	Article 3.1(a) Health EN62479:2010
	Article 3.1(b) EMC: Draft EN 301 489-1 V2.2.0 (2017-03) EN 301 489-3 V2.1.1 (2019-03)
	Article 3.2 Radio: EN 300 220-1 V3.1.1 (2017-02) EN 300 220 2 V3.1.1 (2017-02)
2011/65/EU and its amendment 2015/863/EU (ROHS)	ROHS 2011/65/EU and its amendment 2015/863/EU
2009/125/EC ERP	ERP: EN 50564:2011

This product belongs to receiver category 2

 : Caution

Push Button

This product contains a coin/button cell battery and if ingested can cause severe chemical burns. If the battery has been ingested, please seek medical advice immediately. In just 2 hours a digested battery can lead to death. Keep new and used batteries away from children. If the battery compartment does not close securely, please stop using the product.

### EU Declaration of Conformity

Applicant: Luceco PLC

Address: Luceco Distribution Centre, Stafford Park 1, Telford Shropshire, United Kingdom

(EU) Luceco SEC/Bobinadora 1-5 08302 Mataró SPAIN

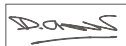
Description: 13A Socket with Door Chime

Model: 322BELL, 822BELL

We (Luceco PLC) declare under our sole responsibility that the products above are inconformity with the essential requirements of the following:

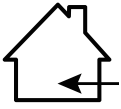
Signed for and on behalf of: David Cleaver

Senior Product Manager



Place of Issue: Stafford Park 1, Telford Shropshire, United Kingdom

Date of Issue: 16/Mar/2020



Indoor use only  
Door Chime Only

**CE** Conformity with all relevant  
EC Directive requirements

#### IMPORTANT

This product does not consist of any serviceable parts and should not be repaired. The device should not be operated by persons who have a lack of experience or knowledge in using such products. People who have a reduced physical, sensory or mental capability should be supervised or given instruction when operating. Children should be supervised, so that they do not play with the device.

#### Environmental Protection

This symbol is known as the 'Crossed-out Wheelie Bin Symbol'. When this symbol is marked on a product or battery, it means that it should not be disposed of with your general household waste. Some chemicals contained within electrical/electronic products or batteries can be harmful to health and the environment. Only dispose of electrical/electronic/battery items in separate collection schemes, which cater for the recovery and recycling of materials contained within. Your co-operation is vital to ensure the success of these schemes and for the protection of the environment.



Masterplug Help Line

**03300 249 279**

Supplied by  
**Luceco PLC**

Luceco PLC Stafford Park 1 Telford TF3 3BD ENGLAND  
(EU) Luceco SEC/Bobinadora 1-5 08302 Mataró SPAIN

Visit our website at

**[www.masterplug.com](http://www.masterplug.com)**